



NETWORK ATLAS



Network Atlas

IX Forum 12 Sao Paulo, Brazil
Mehmet Akcin



About Network Atlas

Network Atlas is a crowd-sourced near real-time map of the global Internet infrastructure detailing the world's submarine and terrestrial networks in real time.



Our Vision

Create one platform which provides visibility to global internet infrastructure.



Discover

Find new routes, improve your network resiliency and stability. Buy network at best price, learn upcoming network and datacenter info



Technical

Have visibility to global network infrastructure operations , long term planning.

Network Atlas

Mission

We would like to be the platform which enables telecommunication and datacenter companies to display their infrastructure and operational status.

Unbiased, Funded thru sponsorship and donations and operated by volunteers..



Network Atlas **Value**

We want NOC staff, Engineers, Business Development executives to use our product to do more with less effort.



Engineering and Operations

One site to gather all information needed for operational status of subsea, terrestrial cables, other outage information..



Capacity and Pricing

Network Atlas will be able to connect you directly with the sales teams giving you ability to acquire capacity without paying commissions to middle parties.

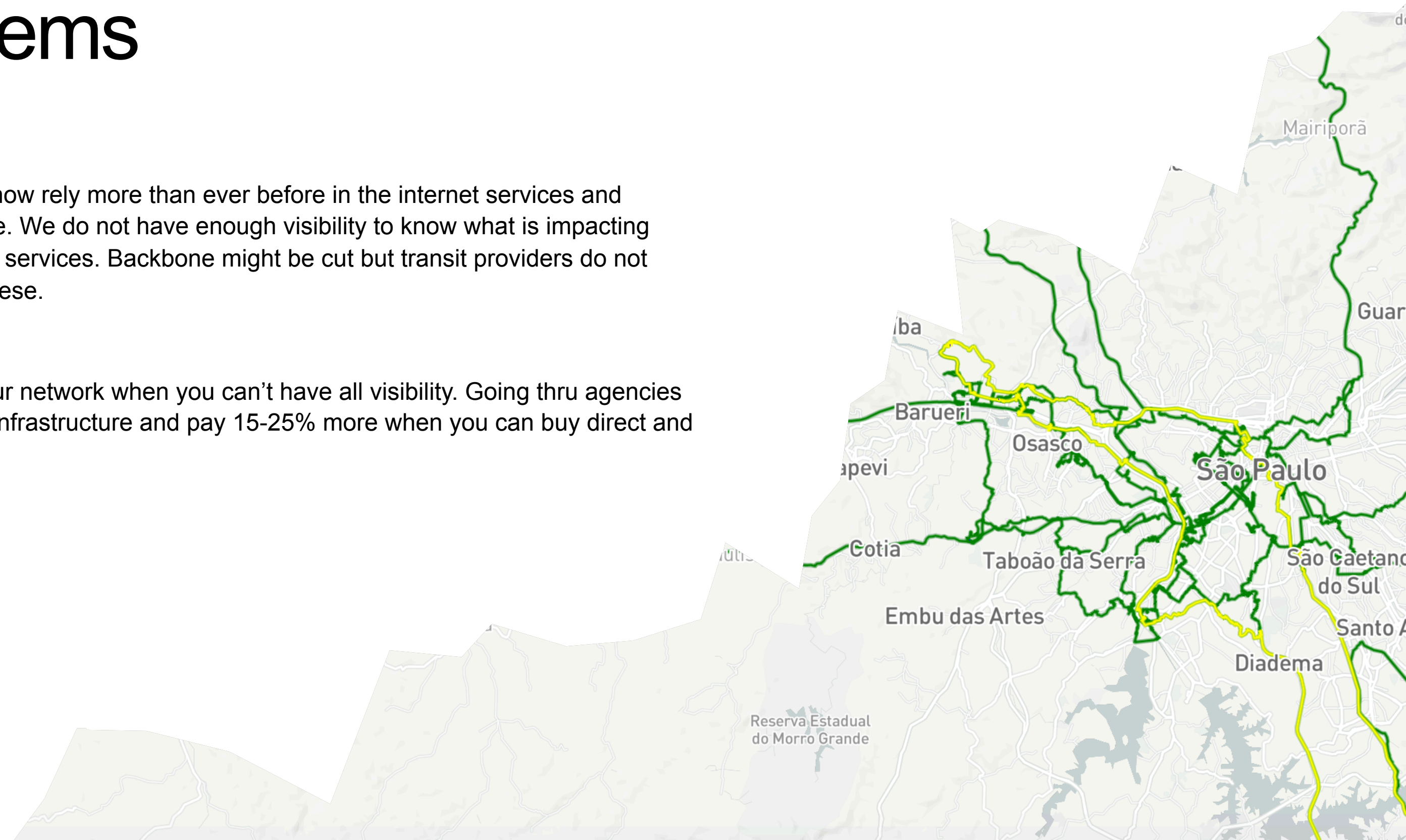
The Problems



In 2018 we now rely more than ever before in the internet services and infrastructure. We do not have enough visibility to know what is impacting status of our services. Backbone might be cut but transit providers do not announce these.



Planning your network when you can't have all visibility. Going thru agencies to buy your infrastructure and pay 15-25% more when you can buy direct and save.

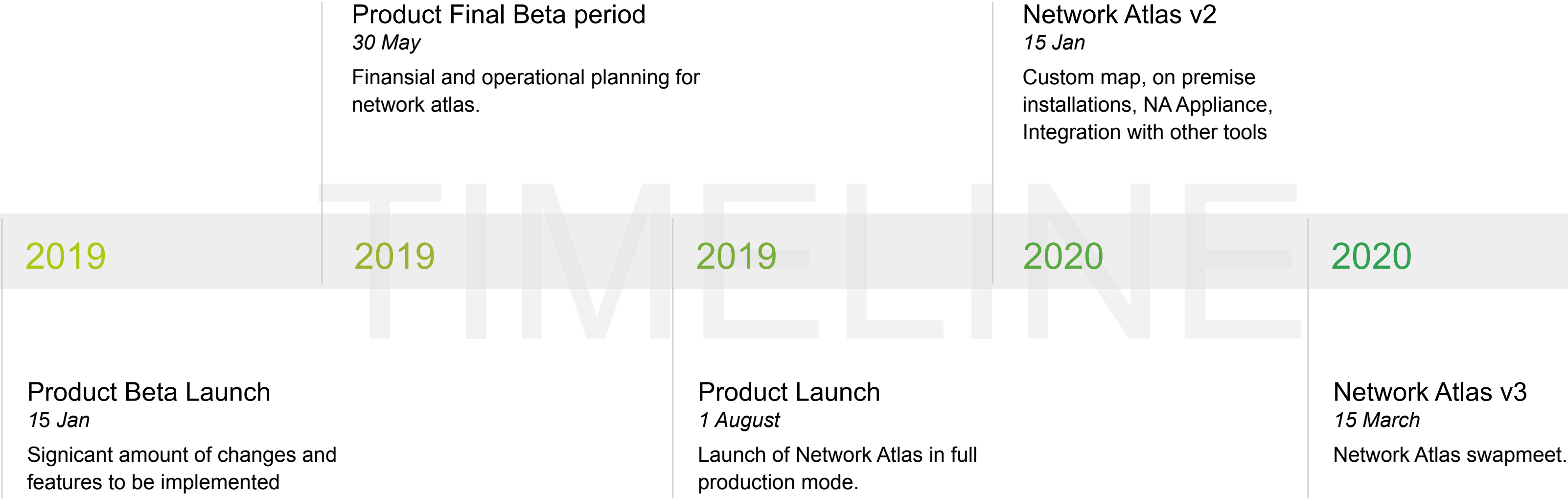


A photograph of a large tree trunk in a park setting. The tree trunk is on the left side of the frame, with its bark showing some texture and a small hole. The background shows a paved path, a bench, and other trees in a park. A large, jagged black shape is overlaid on the right side of the image, partially obscuring the tree and the background. The text 'The Solution' is centered over the black shape.

The Solution

Using network atlas , you will be able to connect directly with wholesale network providers who own and operate their fiber. This will give you opportunity to build more resilient and stable network while saving because you can now buy direct.

Project Timeline



PASSION LED US HERE



Strength

We have the most experienced team and mapping technology.



Weakness

Addressible market size is very small.



Opportunity

With this tool we can help others to become more interested in network and infrastructure.



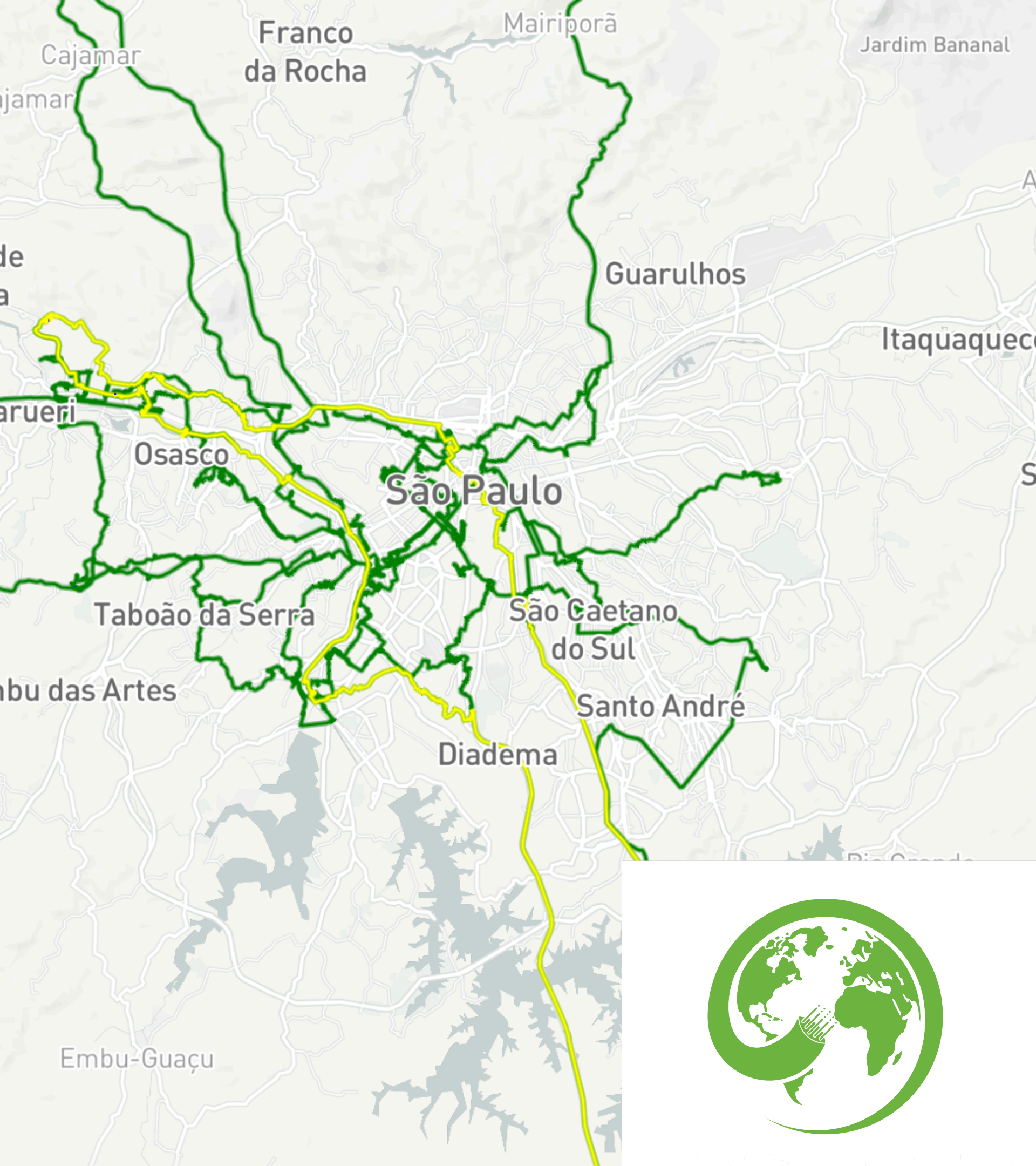
Threats

Financial constraints.

A world map with a dark grey background, overlaid with a complex network of thin lines in various colors (green, red, yellow, blue). The lines represent a global network, with a particularly dense concentration in the North Atlantic and Europe. The map is semi-transparent, showing the outlines of continents and oceans. The text 'Our Products' is centered over the map.

Our Products

Network Atlas will have technical and business focused products.



Technical Overview

There are various different technical problems we intend to solve. Here are some examples.



Provide visibility of the submarine and terrestrial fiber operational status.



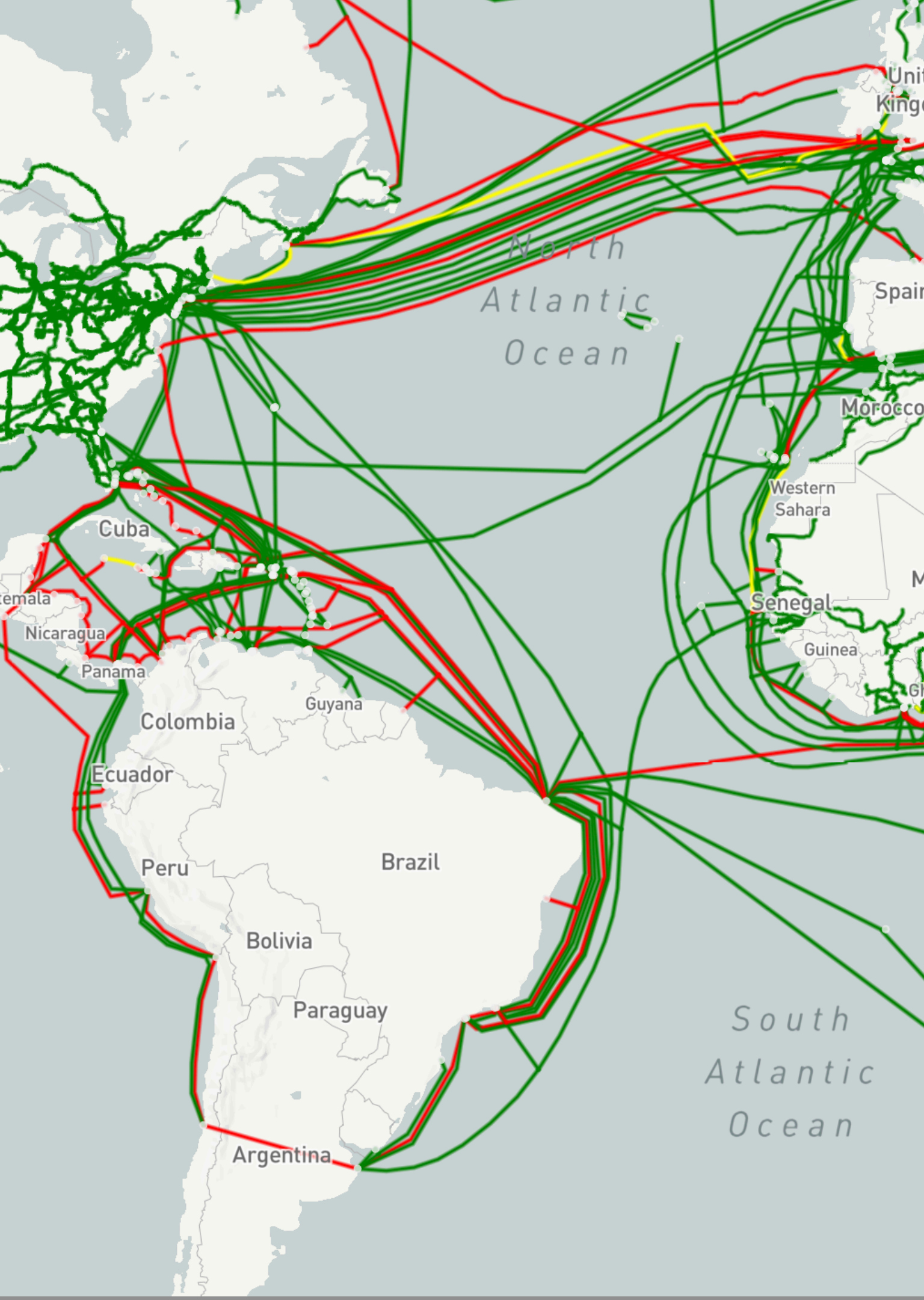
Provide technical details of the fiber routes to help network planning teams to build more resilient network



Improve additional technical information for users and create frameworks to work.







Business Overview

Engage directly with Network and Datacenter providers.



Improved process to acquire network and datacenter capacity.

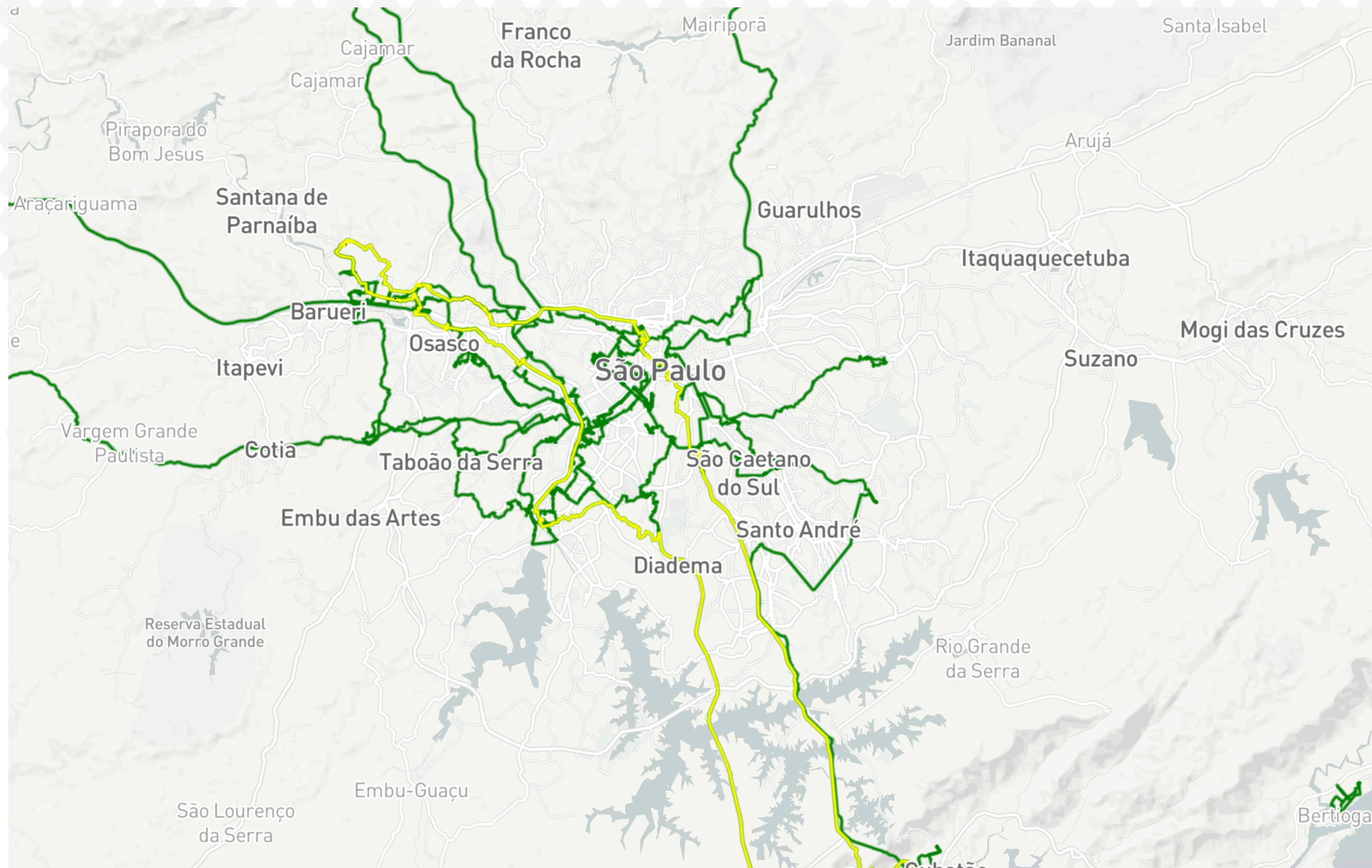


Swap, See special deals, and more



No commissions, ever.

DEMO @ <https://dev.networkatlas.org>



Contact Info

www.networkatlas.org

Slack, E-mail group, and sponsorship details

E-mail me mehmet@networkatlas.org

